

# Steel types

## Technical data sheet

- Font engraving similar to DIN 30640
- Nickel-plated design
- Single or complete in type box available
- On stock available engravings: A - Z; 0 - 9; . (dot); , (comma); - (dash); / (slash)



BORRIES steel types

### Application Area

Steel types were used to stamp fixed text. They can be combined in a type box or in special numbering heads. In BORRIES hand stamping tools steel types were especially used for control stamping.



Steel types in a type box

### Options

- Smaller or bigger font heights as well as special characters on request.

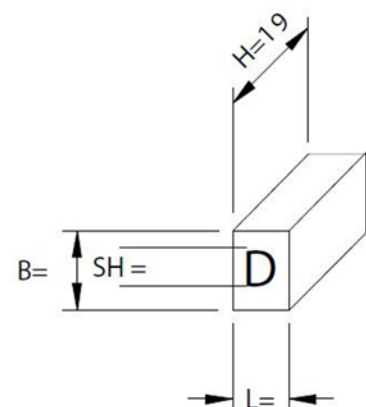
### Available sizes

Standard: on stock

Premium quality: ca. 1-2 weeks

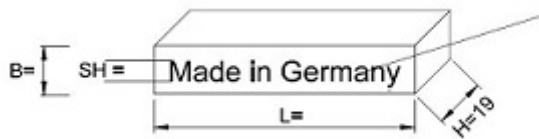
SH – font height	L – stamp length	B – stamp width	H – stamp height		Original marking height
			Standard	Premium quality	
1,0	1,5	4,0			123ABC
1,5	1,5	4,0			123ABC
2,0	2,0	4,0			123ABC
2,5	2,5	6,0			123ABC
3,0	3,0	6,0	19 mm DIN ISO 2768-1	19 mm ± 0,02	123ABC
4,0	4,0	8,0			123ABC
5,0	5,0	8,0			123ABC

all dimensions in mm



**Engraved/ block stamps**

- Single stamps or multidigit engravings medium-spaced, semi closed-spaced and closed spaced lettering
- Engraving design: spiky, blunt plane or perforated
- Special characters logos etc.

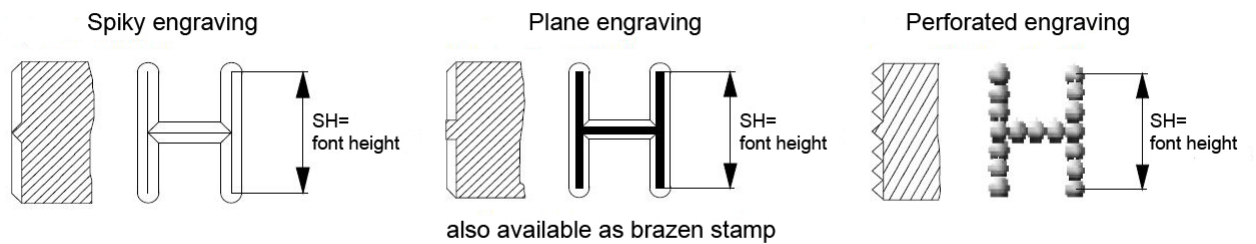


Engraving is inverse on the stamp



**Option**

- Dimension, form and engraving at individual customer requirements



**Pin stamps**

- Dimension, form and engraving at individual customer requirement
- Used in Borries hand stamping tools (BM 10, BM 21, BM 25) and stamping machines (BM 11/12, BM 18/21, BM 30/35)



**Option**

- Special engravings on request

Technical details are subject to change.

